

Service Data

Vickers®

Vane Pumps



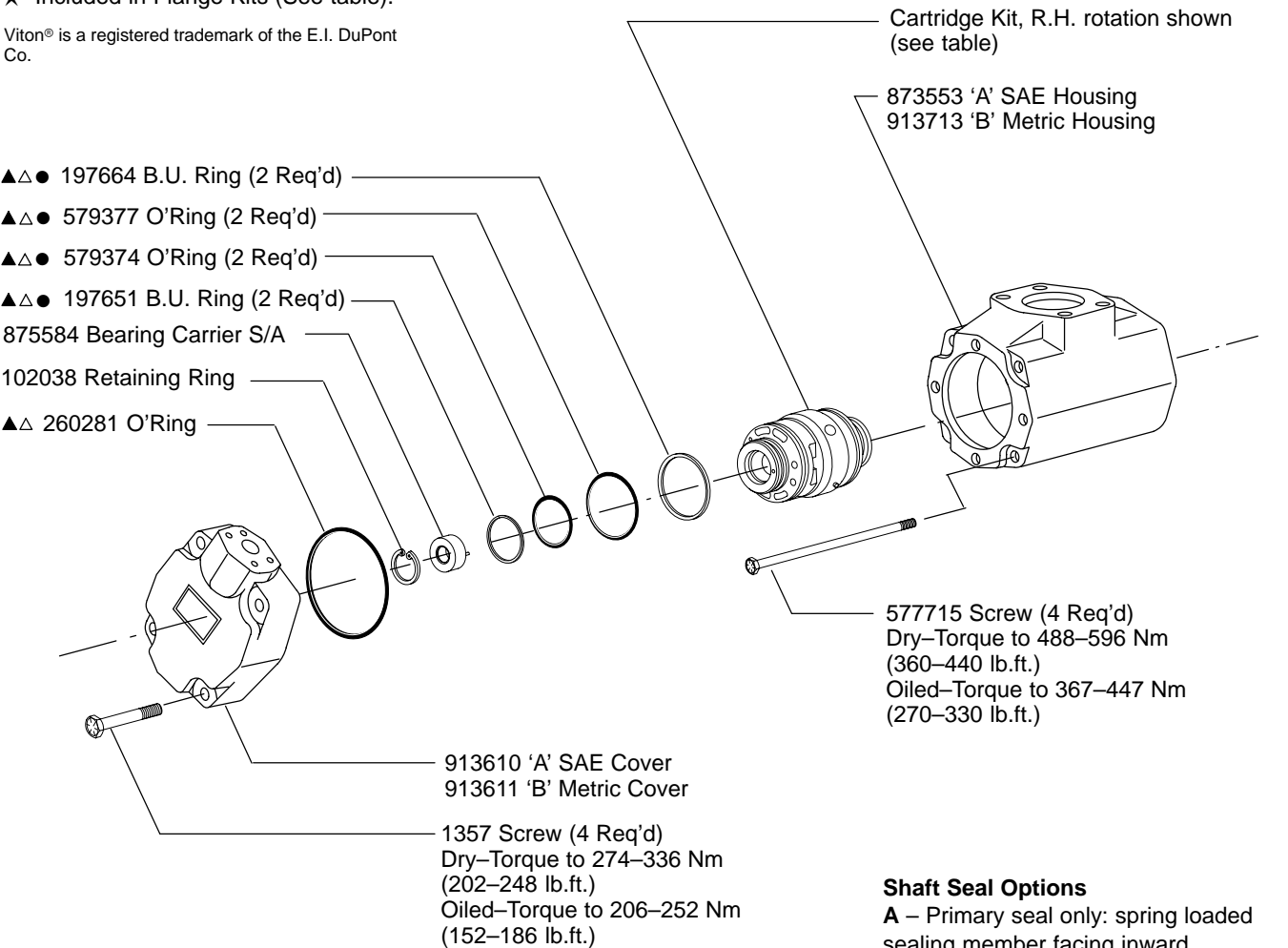
High Pressure, High Performance Double Vane Pump

4535VPF Series -21 Design

NOTE: Lubricate all parts and seals with a thin coat of oil at assembly.
Parts prefixed with symbols are available only in kits.

- Included in Cartridge Kits (see table).
- ▲ 02-160550 STD Seal Kit, Single Shaft Seal or
02-160551 Viton® Seal Kit, Single Shaft Seal
- △ 02-160552 STD Seal Kit, Double Shaft Seal or
02-160553 Viton® Seal Kit, Double Shaft Seal
- ★ Included in Flange Kits (See table).

Viton® is a registered trademark of the E.I. DuPont Co.

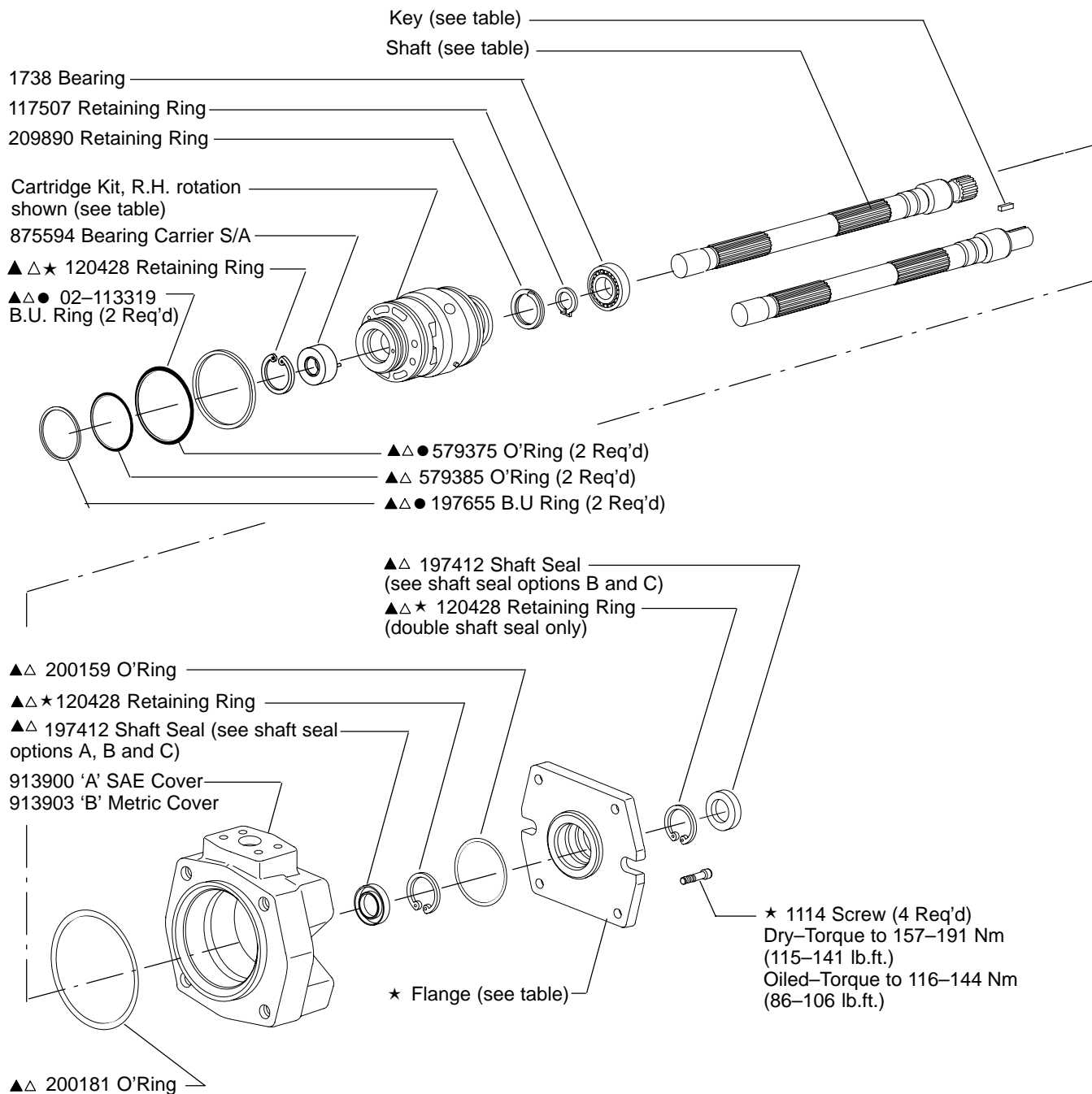


Shaft Seal Options

- A** – Primary seal only: spring loaded sealing member facing inward.
- B** – Primary and secondary seals: primary seal with spring loaded sealing member facing inward and secondary seal with spring loaded sealing member facing outward.
- C** – Primary and secondary seals: both with spring loaded sealing member facing inward.

To reverse Cartridge rotation remove Retaining Ring and Bearing Carrier S/A. Install Bearing Carrier S/A and Retaining Ring in opposite end of Cartridge and reinstall Cartridge facing in opposite direction. For R.H. rotation the end of the Cartridge with screw heads showing will be installed toward the cover end. For L.H. rotation the end of the Cartridge with screw heads showing will be installed toward the shaft end.

| Model Code (Cover End) | ● Cartridge Kit Standard | ● Cartridge Kit Viton® |
|---------------------------|-----------------------------|---------------------------|
| 4535VPF-***-090 | 02-322011 | 02-322012 |
| 4535VPF-***-100 | 02-322013 | 02-322014 |
| 4535VPF-***-112 | 02-322015 | 02-322016 |
| 4535VPF-***-125 | 02-322017 | 02-322018 |
| 4535VPF-***-135 | 02-322019 | 02-322020 |



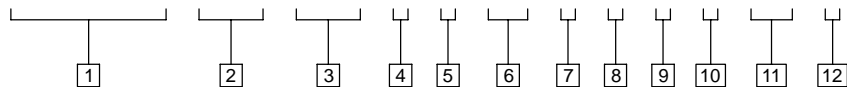
| Model Code (Shaft End) | ● Cartridge Kit Standard | ● Cartridge Kit Viton® |
|---------------------------|-----------------------------|---------------------------|
| 4535VPF-140-*** | 02-322069 | 02-322070 |
| 4535VPF-160-*** | 02-322071 | 02-322072 |
| 4535VPF-180-*** | 02-322073 | 02-322074 |
| 4535VPF-195-*** | 02-322075 | 02-322076 |

| Flange Type | ★ Flange Kit | |
|------------------------|-------------------|-------------------|
| | Single Shaft Seal | Double Shaft Seal |
| SAE J744-127-2 (SAE C) | 02-142497 | 02-142501 |
| ISO 3019/2-125A2HW | 02-142498 | 02-142502 |
| SAE J744 152-2 (SAE D) | 02-142499 | 02-142503 |
| ISO 3019/2-160A2HW | 02-142500 | 02-142504 |

| Model Code | Shaft | Key |
|-----------------------|--------|--------|
| 4535VPF-***-***-*--01 | 928558 | 928542 |
| 4535VPF-***-***-*--02 | 928560 | — |
| 4535VPF-***-***-*--03 | 928561 | 928547 |
| 4535VPF-***-***-*--05 | 928562 | 928543 |
| 4535VPF-***-***-*--06 | 877159 | — |

Model Code

4535VPF-*-***-**-**-***-**-**-**-21-**-****



1 Series designation (frame size)

4535VPF – 230 to 330 cm³/r
(14.03 to 20.14 in³/r)

2 Displacement – front section

140 – 140 cm³/r (8.54 in³/r)
160 – 160 cm³/r (9.76 in³/r)
180 – 180 cm³/r (10.98 in³/r)
195 – 195 cm³/r (11.90 in³/r)

3 Displacement – rear section

090 – 90 cm³/r (5.49 in³/r)
100 – 100 cm³/r (6.10 in³/r)
112 – 112 cm³/r (6.83 in³/r)
125 – 125 cm³/r (7.625 in³/r)
135 – 135 cm³/r (8.24 in³/r)

4 Port connection

A – SAE 4-bolt flange
B – Metric 4-bolt flange

5 Flange mounting style

A – SAE J744 127–2 (SAE C)
B – ISO 3019/2 125A2HW
C – SAE J744 152–2 (SAE D)
D – ISO 3019/2 160A2HW

6 Shaft end

01 – SAE J744 38–1
(1.50 in keyed shaft)
02 – SAE J744 38–4
(C–C splined shaft)
03 – ISO 3019/2 E40N
(40mm keyed shaft)
05 – SAE J744 44–1
(1.75 in keyed shaft)
06 – SAE J744 44–4
(D splined shaft)

7 Shaft seal

A – Single, primary
B – Double, secondary (spring side out)
C – Double, secondary (spring side in)

8 Seal type

N – Standard, Buna N
V – Viton®
W – Buna N with Viton® shaft seal(s)
Viton® is a registered trademark of the E.I. DuPont Co.

9 Outlet port no. 1 position (viewed from cover end)

A – Opposite inlet port.
B – 90° counterclockwise from inlet port.
C – Inline with inlet port.
D – 90° clockwise from inlet port.

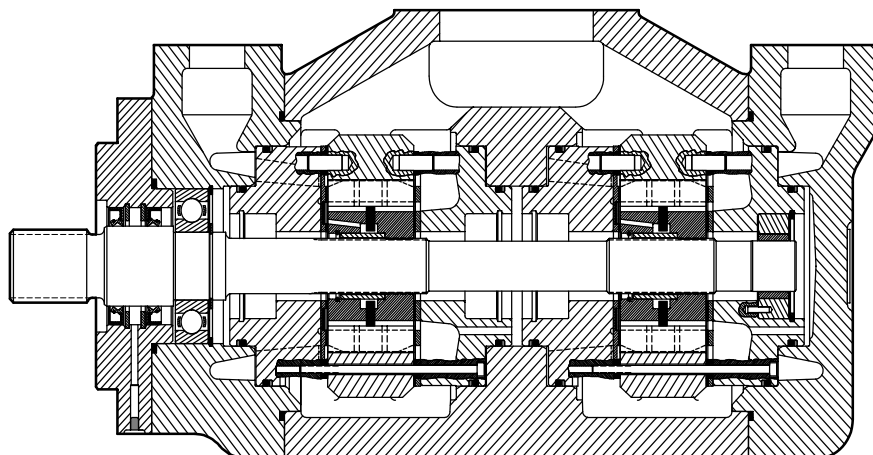
10 Outlet port no. 2 position (viewed from cover end)

A – 135° counterclockwise from inlet port.
B – 45° counterclockwise from inlet port.
C – 45° clockwise from inlet port.
D – 135° clockwise from inlet port.

11 Design

12 Rotation (viewed from shaft end)

R – Right hand (clockwise)
L – Left hand (counterclockwise)



Typical sectional view

Eaton Hydraulics

15151 Highway 5
Eden Prairie, MN 55344
Telephone: 612 937-7254
Fax: 612 937-7130
www.eatonhydraulics.com

46 New Lane, Havant
Hampshire PO9 2NB
England
Telephone: (44) 170-548-6451
Fax: (44) 170-548-7110

